

Laser-engraved anilox rolls and sleeves



Anilox rolls
selection guide

Making our planet more productive™

Novaline™ Series Engravings

Nova™ UV Gold

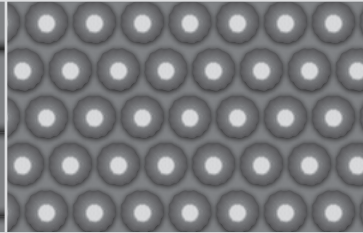
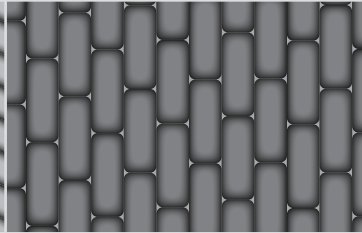
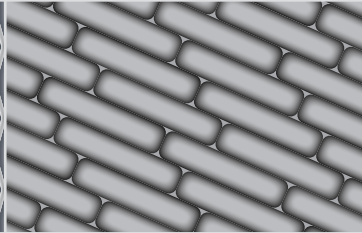
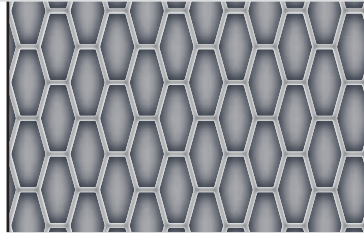
Nova™ Gold

Nova™ Silver

Nova™ ART™¹ Gold

Long-life precision with Praxair laser-engraved anilox rolls.

When your reputation is on the line, we protect it.



- Ideal for UV ink use, including aluminum, film and paper packaging
- Delivers high-quality, high-resolution printing with minimized ink spitting
- Achieves density with a 20% to 30% shallower engraving depth for improved ink release

- Ideal for high-definition flexible, paper and corrugated packaging, process printing
- Provides greater transfer rate and higher achievable volumes for screen counts
- Improves ink transfer and cleaning with a 20% shallower engraving depth

- For solid, screens and text high-density printing
- Ideal for flexo printing of flexible, paper and high-quality corrugated packaging
- Reaches higher densities with minimal dot penalty gain

- For demanding coatings, specialty materials and varnish applications
- Smooth solids coverage, improves gloss and produces less pinholing
- Supports uniform doctor blades from uniformly distributed cell posts

Applications

Applicators (Coating, Laminating)	+			+++
Corrugated (Post-print)		+		+++
Corrugated (Pre-print)		++		+++
Envelope		++		+++
Flexible Packaging	+++	+++	+	+
Folding Carton	++	+++	++	++
Liquid Carton/Aseptic Packaging	++	+++		++
Metal Decorating	++			+++
Newspaper			+	
Printed Electronics	++/+++			+++
Publications				+++ / +++ varnish
Single Use (Tissue, Towel, Cups)			++	
Tag and Label	+++		+	+/++ coating
Wallcoverings		++		

+ = Good

++ = Better

+++ = Best

¹ Anilox Reverse Technology

² Ink Spitting Free

* Not available in the U.S.

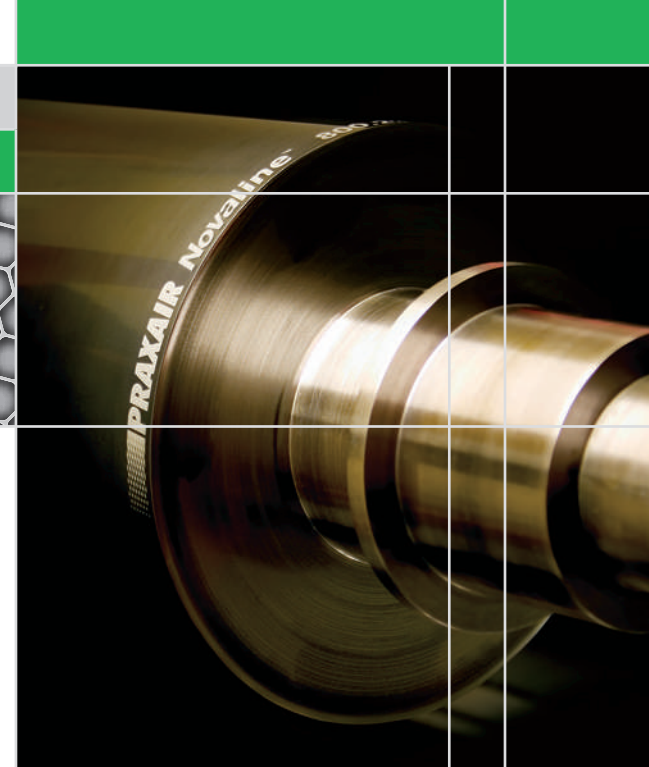
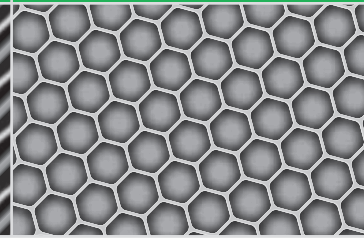
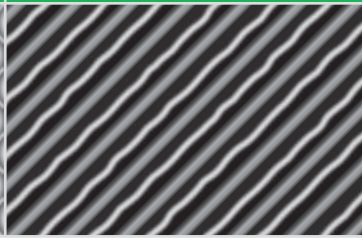
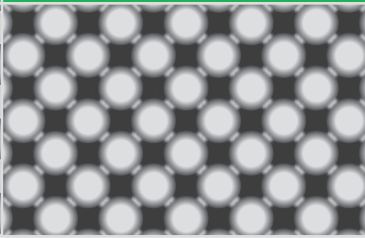
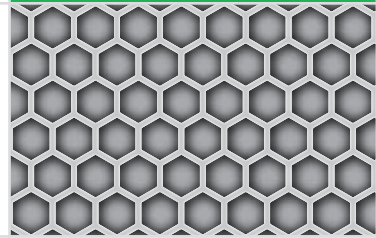
Proline® Series Engravings

Proline® 60°

Proline® ART™1

Proline® HEL*

Proline® ISF2*



- Most popular pattern in use today
- Transfers ink to the plate easily and produces uniform cell structure
- Suppresses moiré effects in screen and process work (angle doesn't interfere with the plate angle)

- Designed for flexo printing, offset coating, gravure coating and laminating markets
- Lays down adhesives, metallics, water-based and UV coatings, and white and heavy ink coverage
- Reduces/eliminates pinholing, resulting in improved density

- Open cell structure offers better ink release for gravure and coater applications
- Optimizes high viscosity materials
- Achieves high volume capacity—50+ BCMs

- Minimizes spitting of UV or high viscosity inks

+	+++	+++	++
++	+ / ++ varnish		
+++	+ / ++ varnish		
+++			
+++	+ / + white		
	+ / ++ varnish		++
+++	++		
+	+++	+	++
+++			
	+++	+	+
+	++		+
+++			
+++	+		+++
++	+		

Engraving images are engineered drawings and are a visual representation only.

Laser-Engraved Ceramic Anilox Roll Volume and Screen Guide

Novaline™ Series												Proline® Series																													
Nova™ UV Gold Nova™ Gold Nova™ Silver Extreme (cm³/m²)			Nova™ UV Gold Nova™ Gold Nova™ Silver Extreme (BCM)			Nova™ ART™ Gold (cm³/m²)			Nova™ ART™ Gold (BCM)			Proline® 60° Extreme (cm³/m²)			Proline® 60° Extreme (BCM)			Proline® ART™ (cm³/m²)			Proline® ART™ (BCM)			Proline® HEL (cm³/m²)			Proline® HEL (BCM)			Proline® ISF (cm³/m²)			Proline® ISF (BCM)								
LPCM	Min	Max	LPI	Min	Max	LPCM	Min	Max	LPI	Min	Max	LPCM	Min	Max	LPI	Min	Max	LPCM	Min	Max	LPI	Min	Max	LPCM	Min	Max	LPI	Min	Max	LPCM	Min	Max	LPI	Min	Max	LPCM	Min	Max	LPI	Min	Max
20			55			20	30.0	100.0	55	19.4	64.6	20	23.2	75.0	55	15.0	48.4	20	27.9	69.8	55	18.0	45.1	20	30.0	90.0	55	19.4	58.1	20			55								
25			60			25			60			25	20.9	68.8	60	13.5	44.4	25			60			25			60			25			60								
30			80			30	25.0	86.0	80	16.1	55.5	30	18.6	62.6	80	12.0	40.4	30	22.5	62.0	80	14.5	40.0	30	25.0	72.0	80	16.1	46.5	30			80								
40			100			40	20.0	76.0	100	12.9	49.1	40	16.0	50.0	100	10.3	32.3	40	21.7	54.3	100	14.0	35.1	40	20.0	54.0	100	12.9	34.9	40			100								
50			120			50	20.0	62.0	120	12.9	40.0	50	14.0	46.0	120	9.0	29.7	50	18.6	46.5	120	12.0	30.0	50	17.5	45.0	120	11.3	29.0	50			120								
55			140			55			140			55	12.0	43.5	140	7.7	28.1	55	15.0	38.8	140	9.7	25.0	55			140			55			140								
60			150			60	20.0	50.0	150	12.9	32.3	60	10.0	40.0	150	6.5	25.8	60			150			60	15.0	36.0	150	9.7	23.2	60			150								
70			180			70	17.5	43.0	180	11.3	27.8	70	8.1	35.0	180	5.2	22.6	70	9.6	34.1	180	6.2	22.0	70	12.0	30.6	180	7.7	20.0	70			180								
80	13.0	27.9	200	8.4	18.0	80	15.0	38.0	200	9.7	24.5	80	7.0	27.9	200	4.5	18.0	80	9.6	27.9	200	6.2	18.0	80	9.0	28.0	200	5.8	18.1	80	12.7	15.2	200	8.2	9.8						
90	11.5	25.6	220	7.4	16.5	90	14.5	33.0	220	9.4	21.3	90	6.5	25.6	220	4.2	16.5	90	8.7	23.3	220	5.6	15.0	90	8.5	24.0	220	5.5	15.5	90	11.4	15.0	220	7.4	9.7						
100	9.9	23.2	250	6.4	15.0	100	14.0	29.0	250	9.0	18.7	100	5.9	23.2	250	3.8	15.0	100	7.1	21.7	250	4.6	14.0	100	8.0	20.0	250	5.2	12.9	100	9.5	14.3	250	6.1	9.2						
110	9.2	21.7	280	6.0	14.0	110			280			110	5.5	20.9	280	3.6	13.5	110			280			110			280			110			280								
120	8.5	20.1	300	5.5	13.0	120	12.0	21.0	300	7.7	13.6	120	4.5	18.6	300	2.9	12.0	120	6.5	19.2	300	4.2	12.4	120	7.5	15.0	300	4.8	9.7	120	7.6	12.5	300	4.9	8.1						
130	7.7	19.3	330	5.0	12.5	130			330			130	4.1	16.7	330	2.6	10.8	130	5.9	17.4	330	3.8	11.2	130			330			130			330								
140	7.0	18.4	360	4.5	11.9	140	11.0	19.0	360	7.1	12.3	140	3.9	14.7	360	2.5	9.5	140	5.3	15.7	360	3.4	10.1	140	7.0	14.0	360	4.5	9.0	140	7.0	10.1	360	4.5	6.5						
150	6.7	17.2	380	4.4	11.1	150			380			150	3.7	13.2	380	2.4	8.5	150			380			150			380			150			380								
160	6.5	16.0	400	4.2	10.3	160	10.0	17.0	400	6.5	11.0	160	3.1	12.0	400	2.0	7.7	160	4.8	14.0	400	3.1	9.0	160	6.0	12.0	400	3.9	7.7	160	6.3	9.5	400	4.1	6.1						
170	6.0	15.5	440	3.9	10.0	170			440			170	2.9	11.5	440	1.9	7.4	170			440			170			440			170			440								
180	6.0	15.0	460	3.9	9.7	180	8.5	16.0	460	5.5	10.3	180	2.9	11.0	460	1.9	7.1	180			460			180			460			180	5.2	8.6	460	3.4	5.6						
190	5.7	14.3	480	3.7	9.2	190			480			190	2.9	10.5	480	1.9	6.8	190			480			190			480			190			480								
200	5.4	13.5	500	3.5	8.7	200	8.0	14.0	500	5.2	9.0	200	2.8	10.1	500	1.8	6.5	200			500			200			500			200	4.8	8.0	500	3.1	5.2						
220	5.0	11.9	550	3.2	7.7	220			550			220	2.6	9.1	550	1.7	5.9	220			550			220			550			220	4.5	7.5	550	2.9	4.8						
240	4.5	10.5	600	2.9	6.8	240			600			240	2.5	8.2	600	1.6	5.3	240			600			240			600			240	4.3	7.0	600	2.8	4.5						
260	4.0	9.6	650	2.6	6.2	260			650			260	2.3	7.7	650	1.5	5.0	260			650			260			650			260	4.2	6.3	650	2.7	4.1						
280	3.8	9.0	700	2.5	5.8	280			700			280	2.0	7.4	700	1.3	4.8	280			700			280			700			280	4.1	6.2	700	2.6	4.0						
300	3.6	8.5	750	2.3	5.5	300			750			300	1.6	6.5	750	1.0	4.2	300			750			300			750			300	4.0	5.8	750	2.6	3.7						
315	3.5	8.3	800	2.3	5.4	315			800			315	1.5	6.3	800	1.0	4.1	315			800			315			800			315			800								
320	3.5	8.1	820	2.3	5.2	320			820			320	1.5	6.0	820	1.0	3.9	320			820			320			820			320	3.8	5.7	820	2.5	3.7						
335	3.3	7.8	850	2.1	5.0	335			850			335	1.5	5.9	850	1.0	3.8	335			850			335			850			335			850								
340	3.2	7.6	860	2.1	4.9	340			860			340	1.5	5.7	860	1.0	3.7	340			860			340			860			340	3.3	5.2	860	2.1	3.4						
360	2.9	7.4	900	1.9	4.8	360			900			360	1.5	5.0	900	1.0	3.2	360			900			360			900			360	3.1	4.8	900	2.0	3.1						
380	2.9	7.0	950	1.9	4.5	380			950			380	1.5	5.0	950	1.0	3.2	380			950			380			950			380	3.0	4.6	950	2.0	2.9						
400	2.9	6.5	1000	1.9	4.2	400			1000			400	1.5	4.5	1000	1.0	2.9	400			1000			400			1000			400	2.9	4.5	1000	1.8	2.9						
420	2.8	6.5	1070	1.8	4.2	420			1070			420	1.5	4.2	1070	1.0	2.7	420			1070			420			1070			420	2.8	4.4	1070	1.8	2.8						
430	2.7	6.4	1100	1.7	4.1	430			1100			430	1.5	4.0	1100	1.0	2.6	430			1100			430			1100			430			1100								
440	2.5	6.2	1120	1.6	4.0	440			1120			440	1.5	4.0	1120	1.0	2.6	440			1120			440			1120			440	2.7	4.3	1120	1.7	2.8						
460	2.5	6.0	1160	1.6	3.9	460			1160			460			1160	0.9	2.6	460			1160			460			1160			460			1160	1.7	2.6						
470	2.5	6.0	1200	1.6	3.8	470			1200			470	1.4	4.0	1200	0.9	2.6	470			1200			470			1200			470	2.6	4.1	1200								
480	2.5	6.0	1230	1.6	3.2	480			1230			480	1.5	4.0	1230	1.0	2.6	480			1230			480			1230			480	2.5	3.8	1230	1.6	2.5						
500	2.5	5.9	1270	1.6	3.7	500			1270			500	1.5	3.5	1270	0.9	2.0	500			1270			500			1270			500	2.4	3.5	1270	1.5	2.3						
510	2.5	5.7	1300	1.6	3.6	510			1300			510	1.4	3.1	1300	0.9	1.8	510			1300			510			1300			510			1300								
520	2.5	5.5	1320	1.6	3.4	520			1320			520	1.4	2.8	1320	0.9	1.7	520			1320			520			1320			520			1320								
550	2.5	5.2	1400	1.6	3.1	550			1400			550	1.4	2.7	1400	0.9	1.6	550			1400			550			1400			550			1400								
600	2.5	4.8	1500			600			1500			600	1.4	2.5	1500			600			1500			600			1500			600			1500								

BCM/in² - Volumes are in billion cubic microns per square inch.
cm³/m² - Volumes are in cubic centimeters per square meter.

The volumes shown are available within Praxair's recommended depth-to-opening ratio.
Please contact your local Praxair Printing Service Center for engravings outside these ranges.

Printed in the United States of America
04-15
Printed on recycled paper
P-40-4062

© Copyright 2015 Praxair S.T. Technology, Inc.
All rights reserved.

www.praxairsurfacetechologies.com
psti-info@praxair.com

Cover pattern is representative; not actual roll engraving.

The information contained herein is offered for use by technically qualified personnel at their discretion and risk without warranty of any kind.